



Filtera
12999 Murphy Road, Suite I-1
Stafford, Texas 77477-3948

281.933.1100 Phone
888.933.0100 Toll Free Phone
281.933.1159 Fax

www.Filtera.com
info@Filtera.com

Rigid Cell VAV Filters



Applications

Rigid Cell VAV filters are designed to meet exact specifications in medium to high efficiency commercial or industrial applications. These filters are used in a variety of applications including: hospitals, manufacturing plants, microelectronic component assembly and food processing.

Rigid Construction

Rigid construction allows these filters to be used in a wide variety of indoor air quality applications. They are ideal for variable air volume systems. The durable one-piece filter frame is "clined" together without the use of rivets to insure long life and rigidity (optional headers do contain rivets).

High Efficiency Synthetic Media

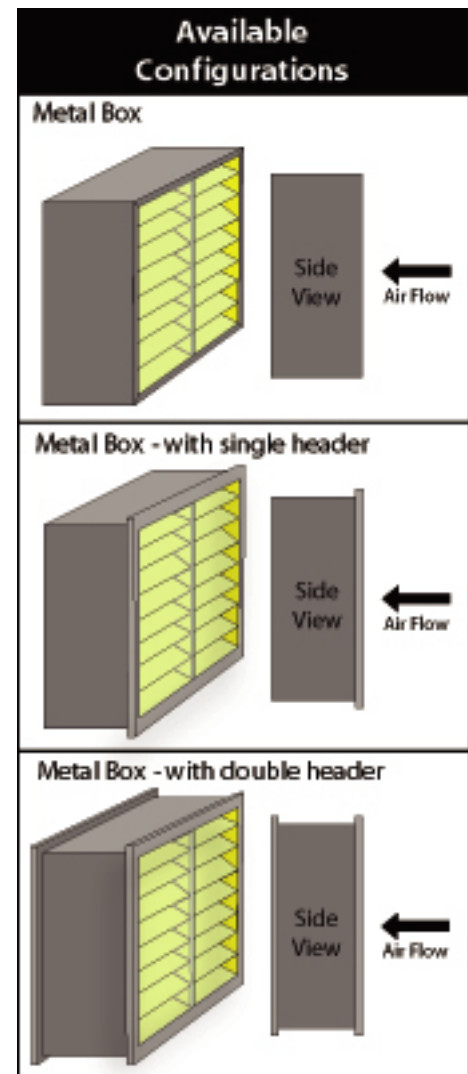
Offered in four standard efficiencies of high-quality synthetic media as well as activated carbon for fume control. The media is designed to resist puncture, thus reducing the chance of air bypass.

Standard Features and Options

Frames are made of 26 gauge galvanized steel. Plastic "fingers" are used as media separators to ensure even pleat spacing and media stability. Headers, gaskets and face guards are available. All standard VAV filters are designed to meet Under Writers Laboratories, Inc. (U.L.) requirements for Class 2 air filters.

Five Media Options:

- 95 % media
- 85 % media
- 65 % media
- 45 % media
- Carbon media



Prices and specifications are subject to change without notice. All sales are made subject to the terms and conditions contained in the Filtera, Statement of Business Policy, as revised from time to time, a current copy of which is available upon request.

Additional Information

Filtera's Rigid Cell VAV Filters

When Indoor Air Quality or protection of processes is critical, these rigid cell filters provide high efficiency in difficult operating conditions. Specifically designed for variable air volume systems and turbulent air, these filters can be used in existing and new air handler installations for high efficiency filtration needs. The following features make these rigid cell filters the premier rigid cell filter on the market.

High Dust Holding - Deep "V" pleats maximize media exposure to air for even dust loading. Gradient density lofted media loads throughout the depth of the media, not just on the surface.

Low Airflow Restriction - Tapered pleat configuration channels air evenly through the filter.

Consistent Performance - Independent testing shows that these rigid cell filters perform at the rated efficiency throughout the service life of the filter. Other filters may take months to build up to the rated efficiency.

Resists Damage - 26 gauge galvanized steel frame is clinched at every corner for maximum rigidity. Robust plastic separators extend under flanges to prevent pleat pack bowing and blowout. Synthetic media has a scrim backing for abrasion and puncture resistance.

Locks Dust In - Unitized plastic separators adhere throughout the pleat pack to hold it stable and prevent dust unloading during turbulence. Media is bonded to expanded metal grid for support in every dimension to prevent media flutter during start up. Media pack is bonded to the entire periphery of the frame. Plastic separators "sandwich" the pleat ends to the media and frame to prevent air and dirt bypass.

Resists Effects of Moisture - 100% synthetic separators are resistant to abrasion, moisture and microbial growth. The frame and expanded metal are galvanized steel to resist corrosion in high humidity and moisture situations.

SUGGESTED SPECIFICATIONS

General: Filters shall be classified by Underwriters Laboratories as Class 2 per the UL 900 flammability test standard. There shall be no beverage board or cardboard incorporated into the filter.

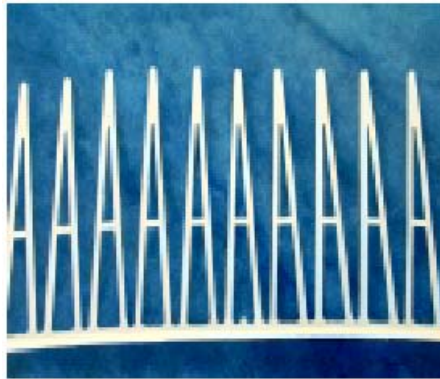
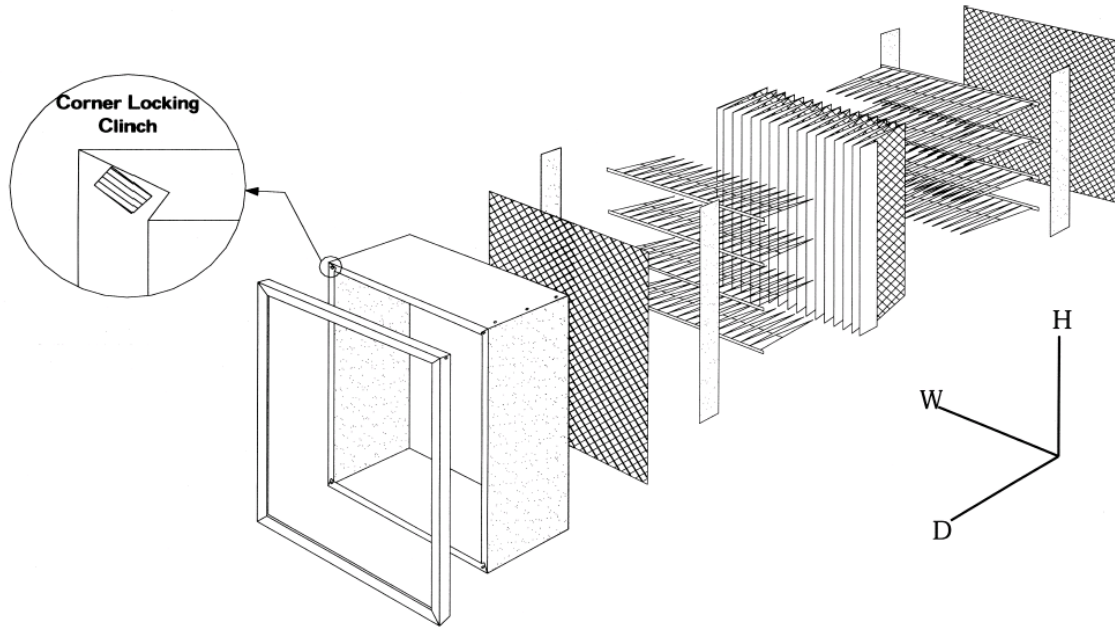
Filter Media: The filter media shall be 100% polypropylene. The filter shall have a minimum efficiency reporting value (MERV) as determined by ASHRAE test method standard 52.2.

Media Support Grid: The filter media shall be continuously bonded to hot dipped galvanized, expanded metal of a diamond configuration with an open area of not less than 95%.

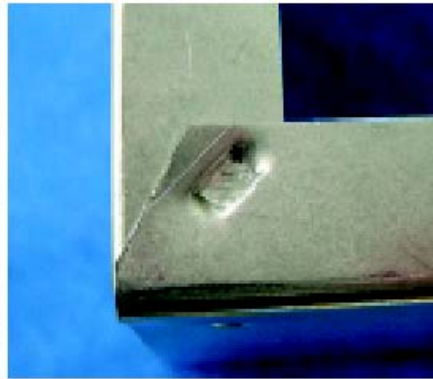
Pleat Stabilizers: Pleat stabilizers shall be designed to conform to a tapered pleat configuration at a nominal spacing of eight pleats per foot. Each pleat shall have a sharp pointed pleat crest. Pleat stabilizers shall be molded polypropylene and shall be bonded to the media surface. The end of each pleat stabilizer shall extend under the lip of the enclosing frame to provide a solid homogenous construction.

Enclosing Frame: The enclosing frame shall be one-piece construction. It shall consist of a single sheet of G-40 galvanized, 26-gauge steel. The steel utilized to construct the frame shall be of first run, blemish free metal. Rivets shall not be used for the construction of this filter except for the attachment of a single header. Frame flanges shall be a minimum of 0.75 inches wide. Flanges shall be clinched on all eight corners on non-header filters. All edges and sides of the media pack shall be adhered to the interior of the frame using a water-based adhesive.

Exploded View of Rigid Cell VAV Filters:



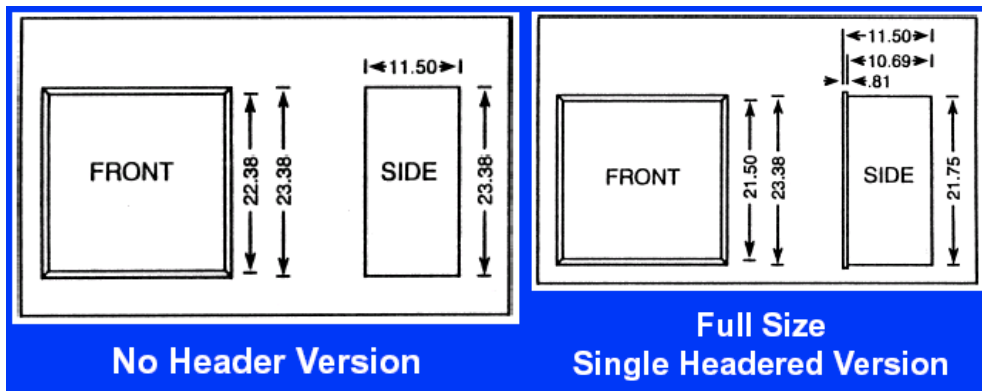
Pleat Stabilizers



Corner Locking Clinch

Nominal Size	Actual Size
12 x 24 x 6	11.38 x 23.38 x 5.50
20 x 20 x 6	19.38 x 19.38 x 5.50
20 x 24 x 6	19.38 x 23.38 x 5.50
24 x 24 x 6	23.38 x 23.38 x 5.50
12 x 24 x 12	11.38 x 23.38 x 11.50
20 x 20 x 12	19.38 x 19.38 x 11.50
20 x 24 x 12	19.38 x 23.38 x 11.50
24 x 24 x 12	23.38 x 23.38 x 11.50

Note: sizes shown are without header



Nominal Size	Media Area No Header (sq. ft.)	Media Area Header (sq. ft.)	Air Flow Capacity (CFM)
12 x 24 x 6	15	13	500
20 x 20 x 6	20	18	694
20 x 24 x 6	24	22	833
24 x 24 x 6	29	27	1000
12 x 24 x 12	29	25	1000
20 x 20 x 12	40	38	1389
20 x 24 x 12	48	44	1667
24 x 24 x 12	58	52	2000

ASHRAE 52.2 Minimum Efficiency Reporting Value (MERV)	Initial Resistance @ 2000 cfm (inches w.g.)
14 (90-95%)	0.54*
13 (80-85%)	0.41*
12 (60-65%)	0.31*
11 (40-45%)	0.16*
Carbon Media	0.15*

* no header, for headered version add 10%